

Sölvi Þór Bergsveinsson
Þórarna Ýr Oddsdóttir



SAMSÝN

The Data Portal – WP2
The Catalogue of Icelandic Volcanoes – WP4
→ One website

Icelandic Volcanoes



SAMSÝN



http://

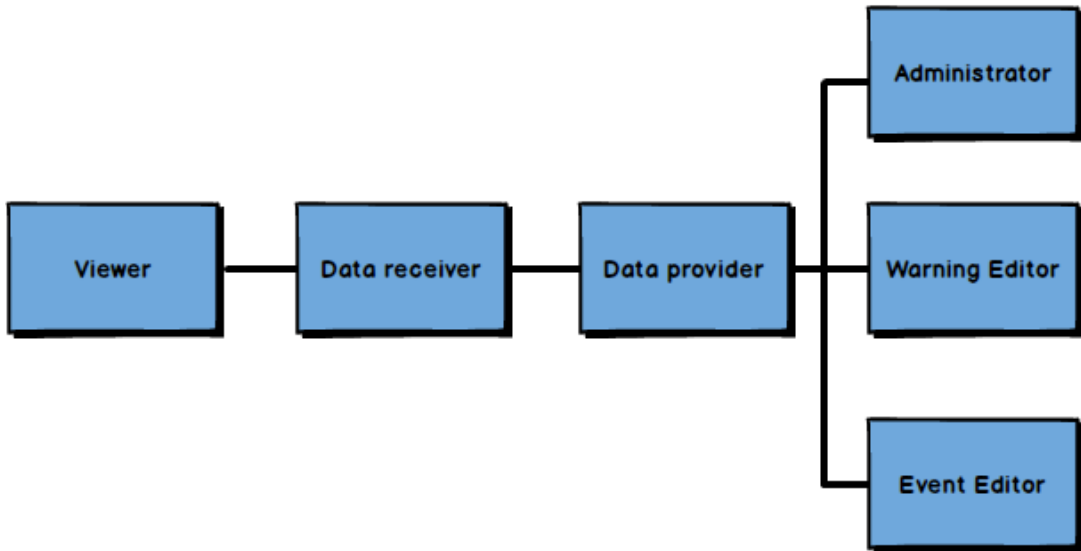


Header

Content

Map

Access levels





http://



Icelandic Volcanoes

Volcanoes Data Portal Catalogue Upload

Alerts: Volcanic eruption starts on top of Eyjafjallajökull

Sort alphabetically

status

threats

1

Hekla

2

Eyjafjallajökull

3

Grímsvötn

4

Hofsjökull

5

Katla

6

Kerlingarfjöll

7

Krafla

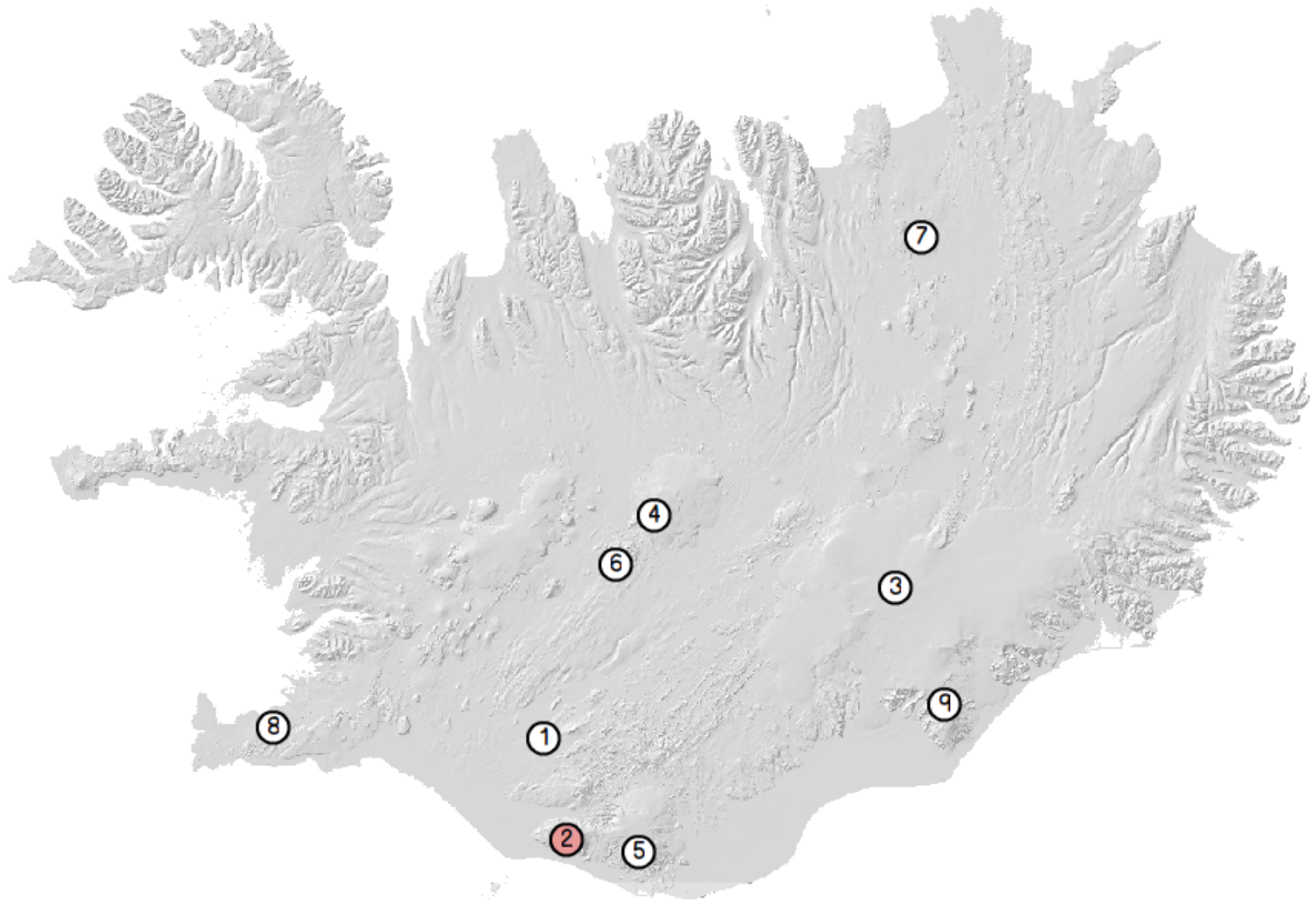
8

Krísuvík

9

Öræfajökull

Layers





http://



Icelandic Volcanoes

Volcanoes | Data Portal | Catalogue | Upload

Alerts: Volcanic eruption starts on top of Eyjafjallajökull

Sort



Hekla



Eyjafjallajökull



Grímsvötn



Hofsjökull



Katla



Kerlingarfjöll



Krafla



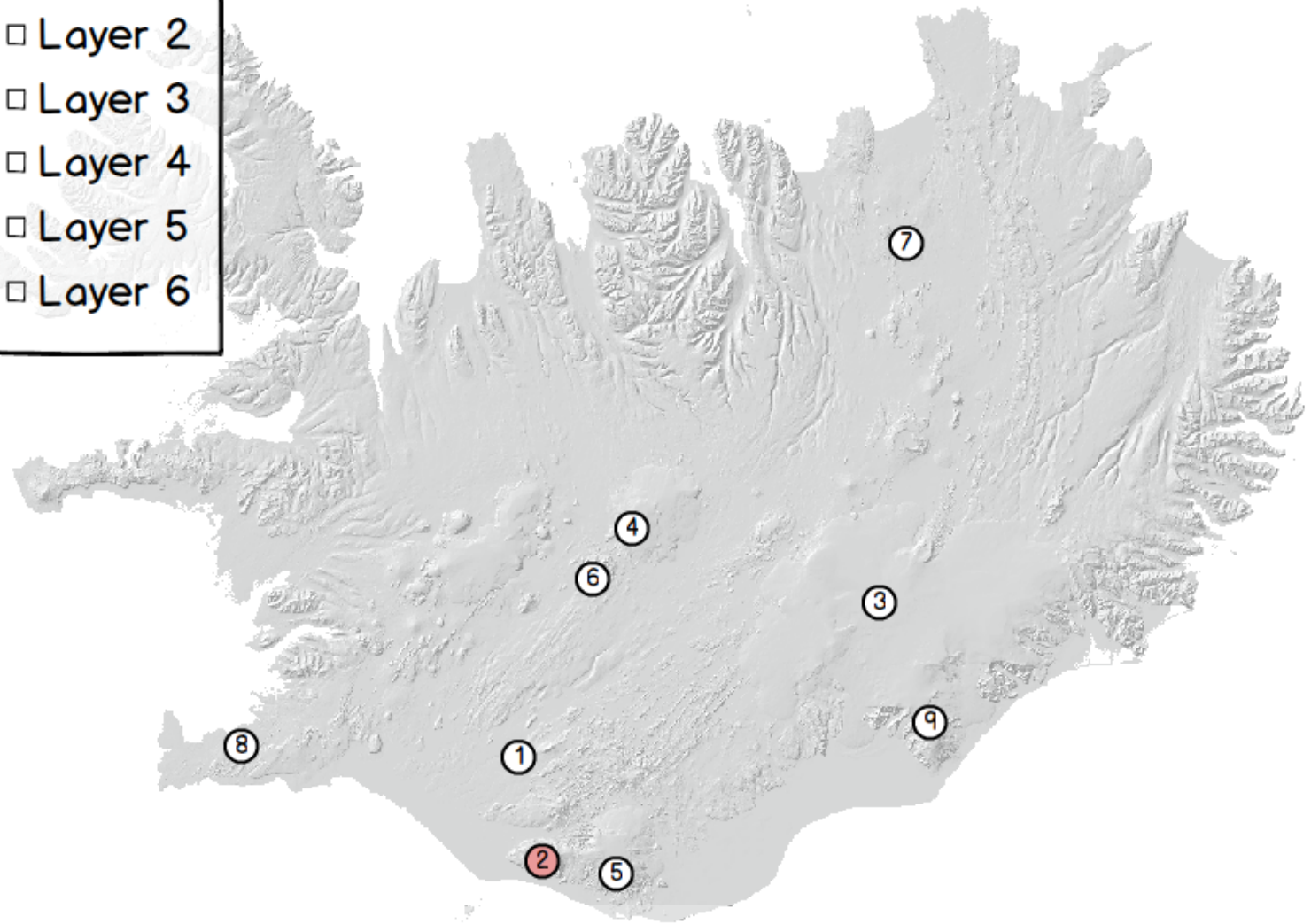
Krísuvík



Öræfajökull

Layers

- Layer 1
- Layer 2
- Layer 3
- Layer 4
- Layer 5
- Layer 6





Icelandic Volcanoes

Volcanoes Data Portal Catalogue Upload

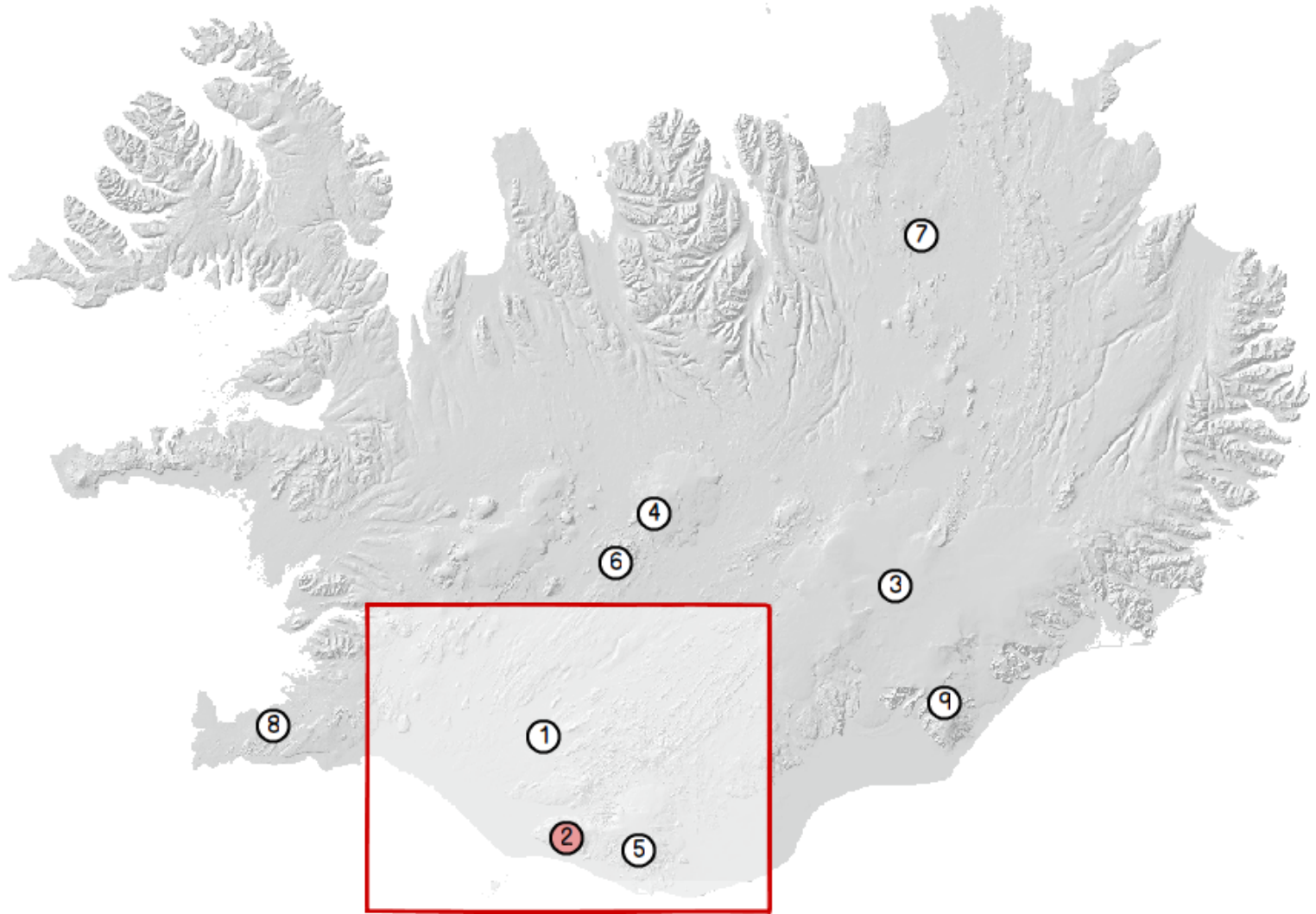
Alerts: Volcanic eruption starts on top of Eyjafjallajökull

Search in high level metadata

- Keywords
- Area of interest
- Category
- Data level (Raw,)
- Time (Date Range, Upload date)

Search

Layers





http://



Icelandic Volcanoes

Volcanoes Data Portal Catalogue Upload Search results

Alerts: Volcanic eruption starts on top of Eyjafjallajökull

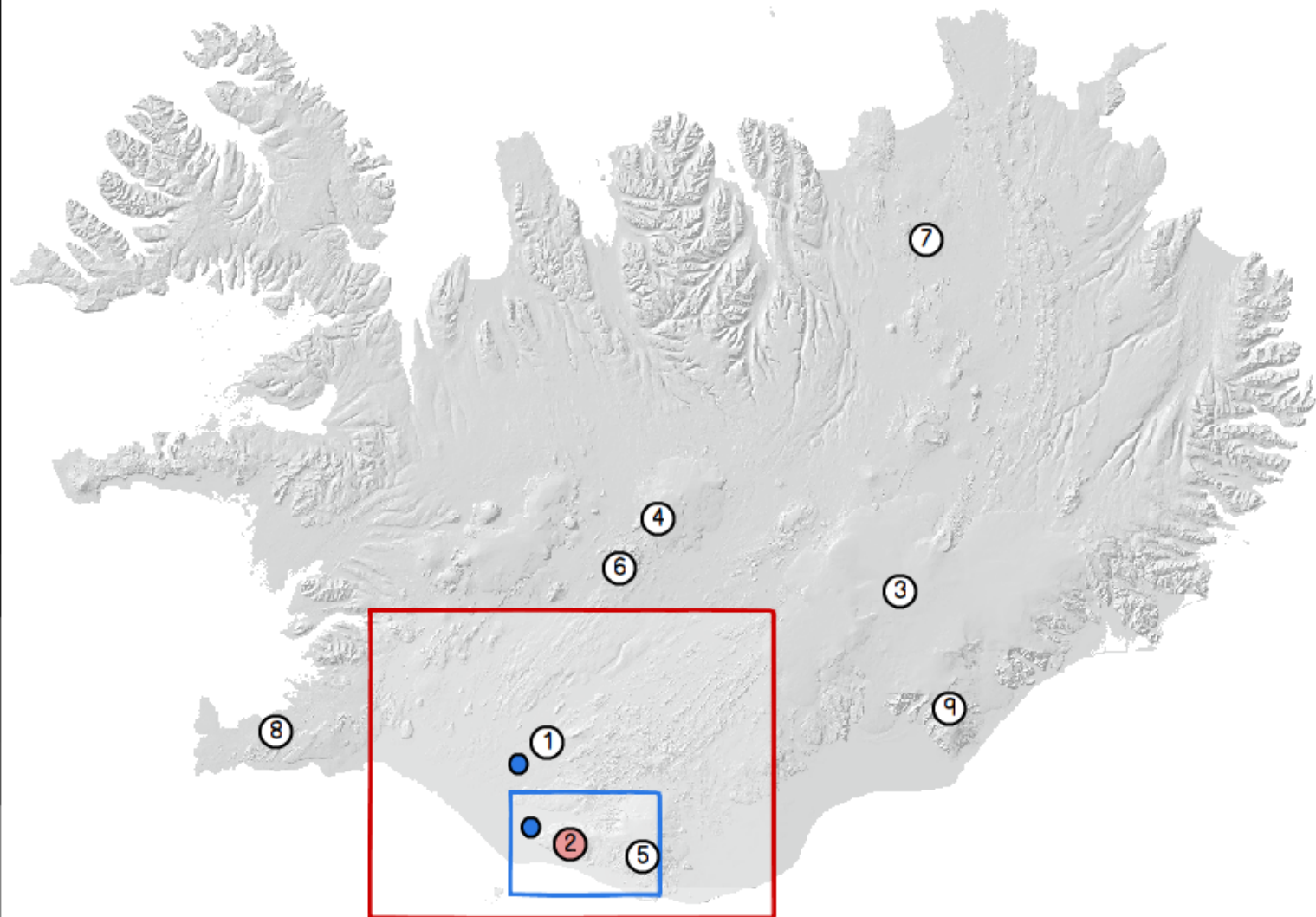
Name	File count	Access restrictions
<input checked="" type="checkbox"/> HEKR	37	Open	
<input type="checkbox"/> KALT	34	Restricted	
<input checked="" type="checkbox"/> STOR	37	Open	

[Download](#)

Type of information for each file

- Name
- Thumbnail
- Location
- Access restrictions
- Data level
- Date
- Source/Owner
- File format
- File count
- File size

Layers





http://



Icelandic Volcanoes

Volcanoes Data Portal Catalogue Upload

Alerts: Volcanic eruption starts on top of Eyjafjallajökull

Sort



Hekla



Eyjafjallajökull



Grímsvötn



Hofsjökull



Katla



Kerlingarfjöll



Krafla

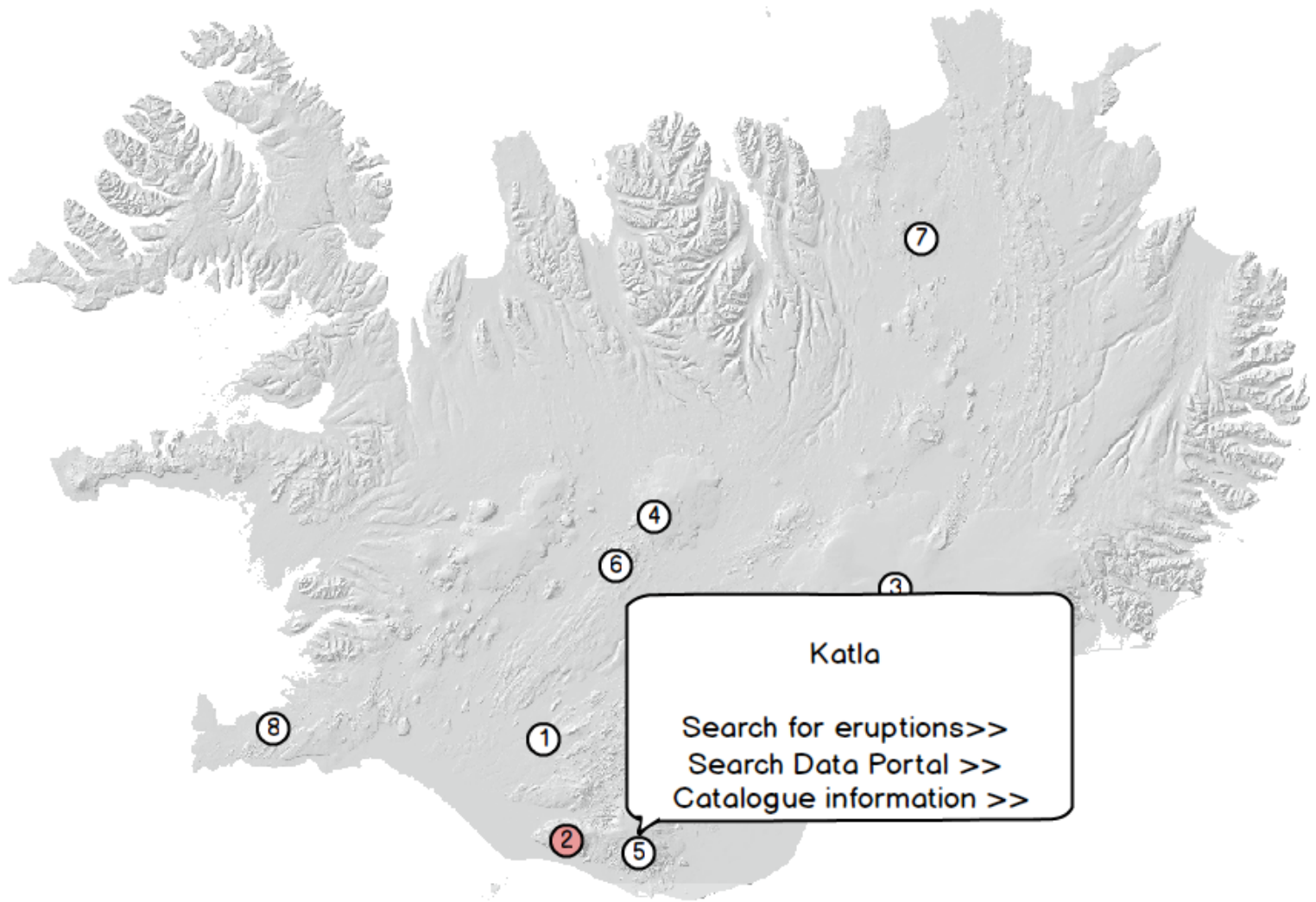


Krísuvík



Öræfajökull

Layers



Katla

[Search for eruptions >>](#)
[Search Data Portal >>](#)
[Catalogue information >>](#)



http://



Icelandic Volcanoes

Volcanoes Data Portal Catalogue Upload Katla

Alerts: Volcanic eruption starts on top of Eyjafjallajökull

Volcanic system: Katla / Katla

One of three most active central volcanoes in Iceland with 20 explosive eruptions in the last 1100 years, ranging in size from VEI 2 to VEI 5, with VEI 3-4 being most common.

Central Volcano

Fissure swarm

Detailed description

Geological setting and tectonic context

Morphology and topography

Eruption history and pattern

Precursory signals

Erupted material

Volcanic hazards

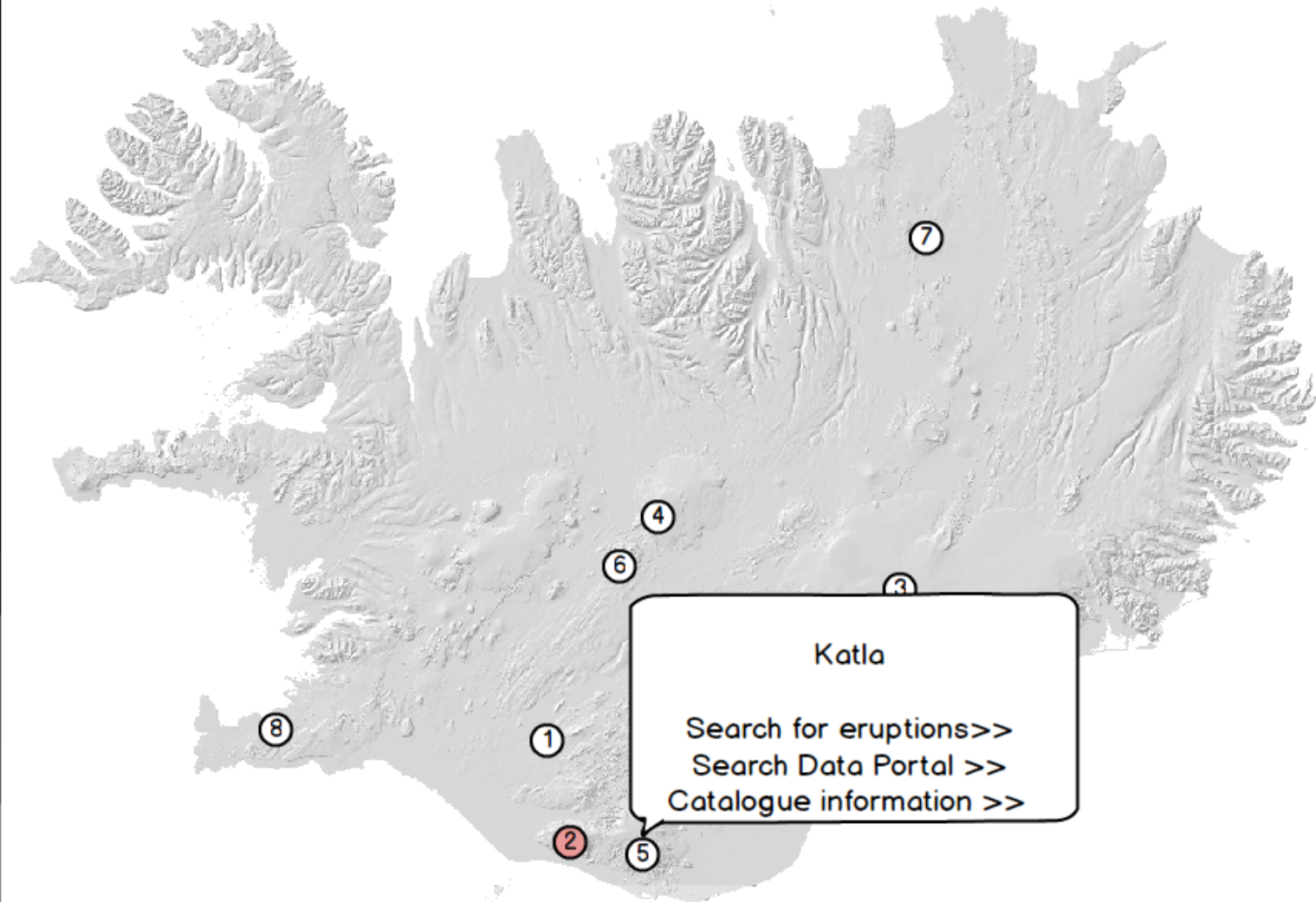
Activity status and monitoring

Worst case scenarios

Extent of knowledge and bibliography

Selected references

Layers





http://



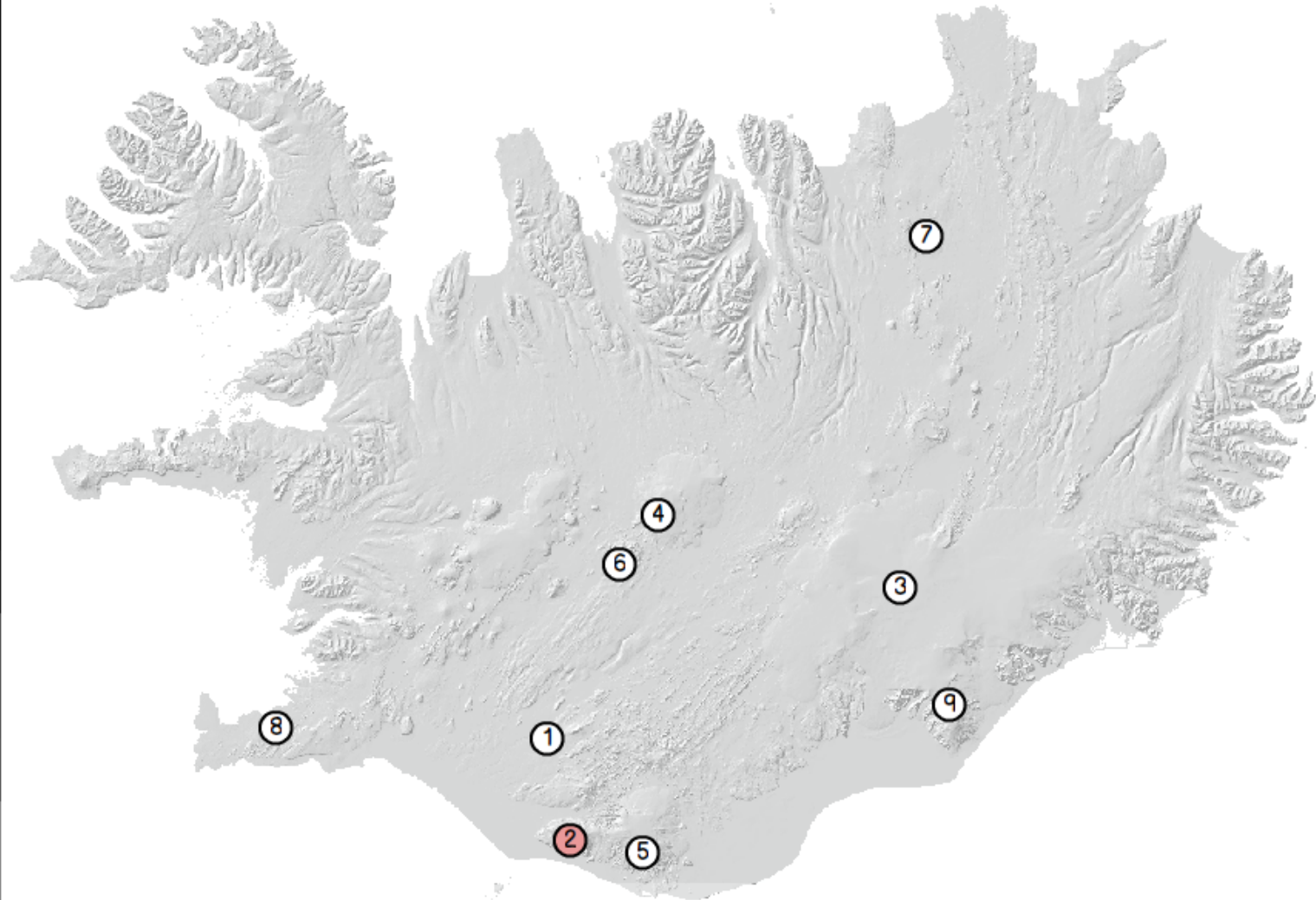
Icelandic Volcanoes

Volcanoes Data Portal Catalogue Upload

Alerts: Volcanic eruption starts on top of Eyjafjallajökull

Attribute Search

- Volcano
- Volcano type
- Volcano subtype
- Eruption year
- Date
- Start time
- Eruption type
- Length of explosive phases
- Duration of eruption
- Previous repose, years
- Magnitude expl phase log₁₀(erupted
- Weight kg x10⁹
- DRE volume (specific weight 2.8)
- Uncomp vol* km³ tephra
- Vol weight
- Column max km
- Max VEI
- Volume lava km³
- Magma composition
- Floods, jökul-hlaups
- Eruption scenario (S, M, L, Worst case)





http://



Icelandic Volcanoes

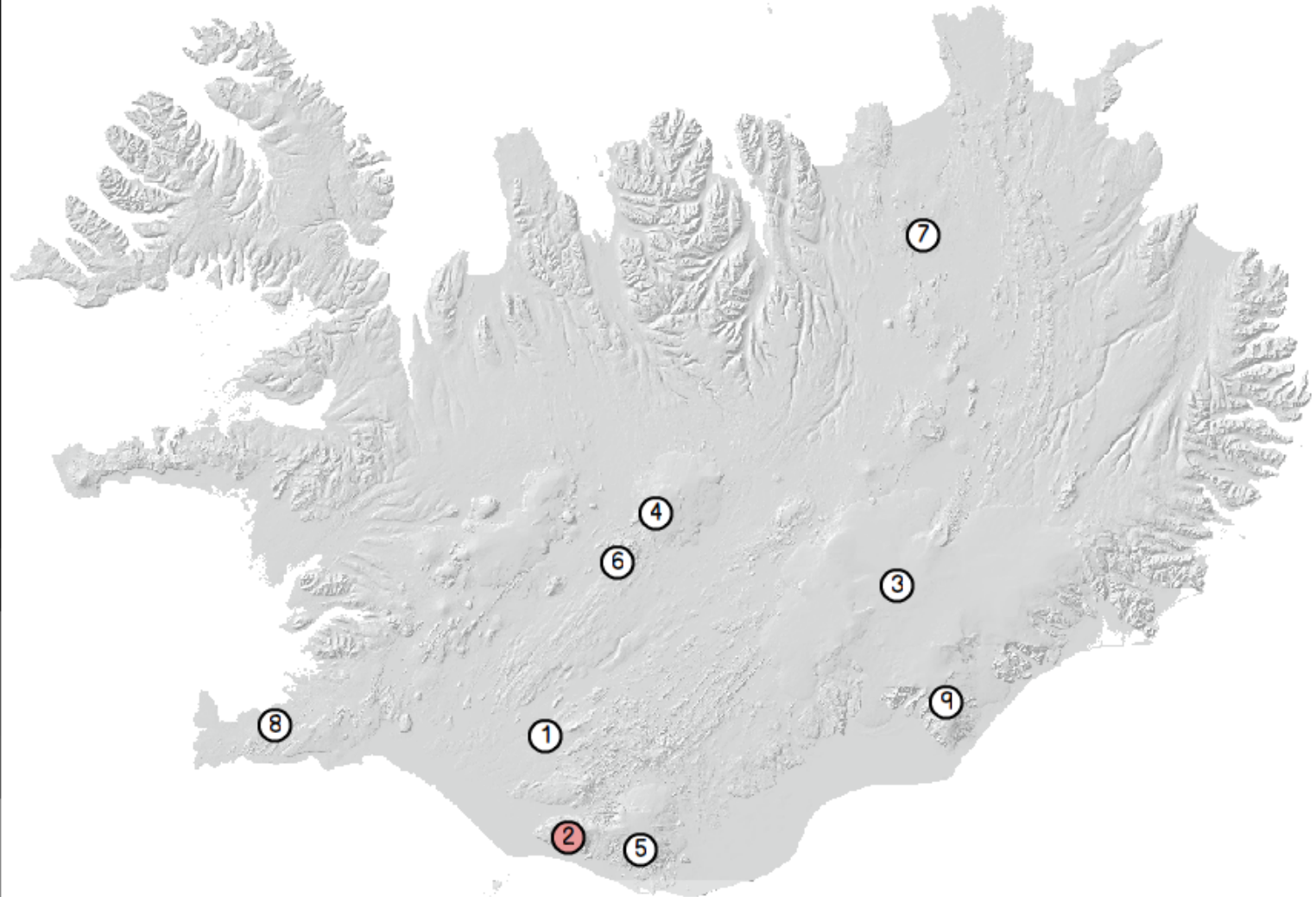
Volcanoes Data Portal Catalogue Upload Eruption search

Alerts: Volcanic eruption starts on top of Eyjafjallajökull

Eruptions:

Volcano ▲	Volcano type ▼	Volcano subtype	Eruption year ▼
Katla	CV	Caldera	2011
Katla	CV	Caldera	1999
Katla	CV	Caldera	1955

Layers





http://



Icelandic Volcanoes

Volcanoes

Data Portal

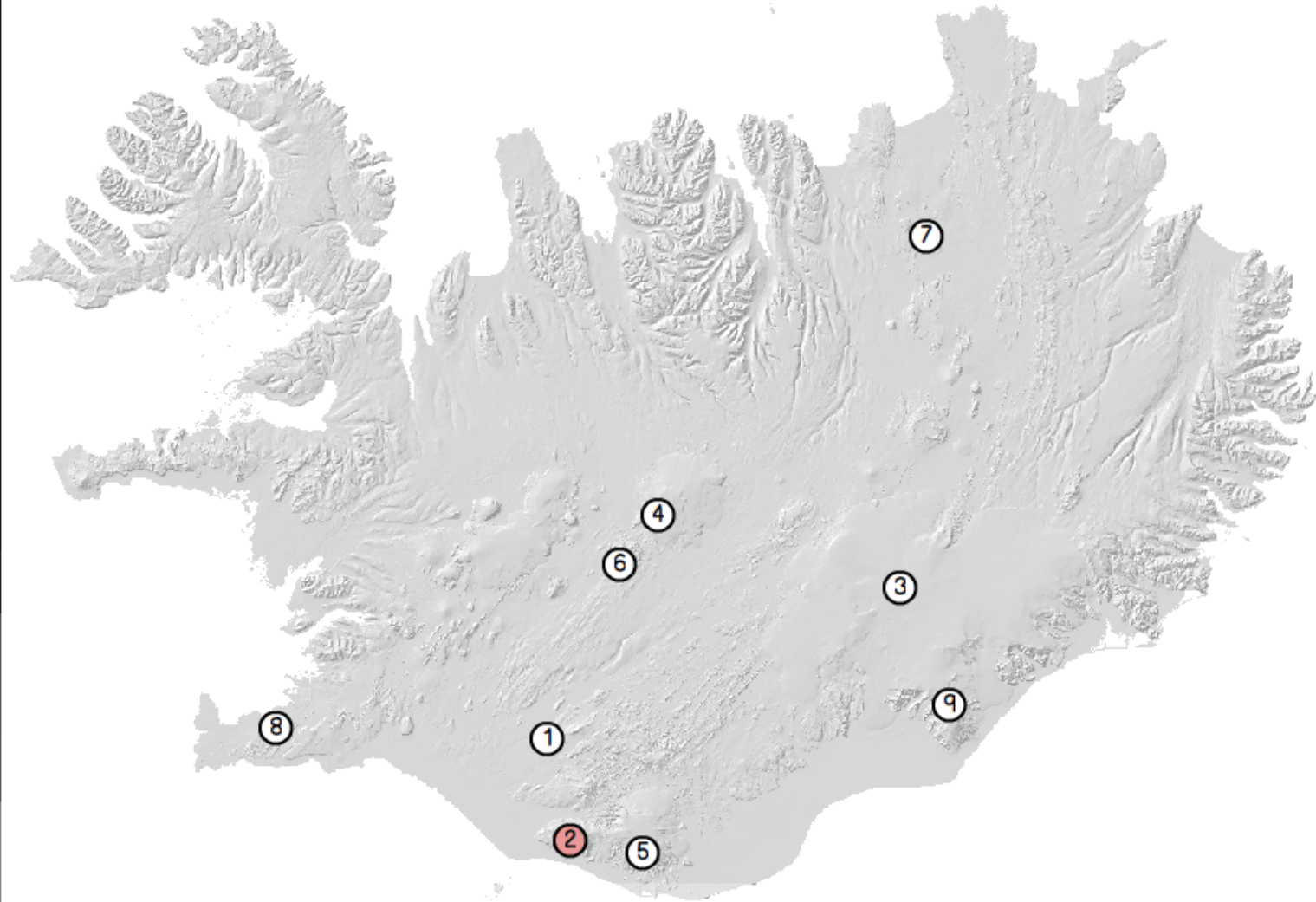
Catalogue

Upload

Alerts: Volcanic eruption starts on top of Eyjafjallajökull

Fill in high level metadata form

- Keywords
- Area of interest
- Category
- Data level
- Date Range
- Thumbnail
- Access restrictions


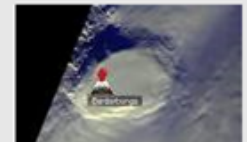
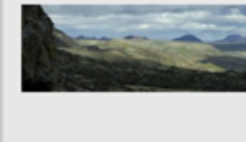














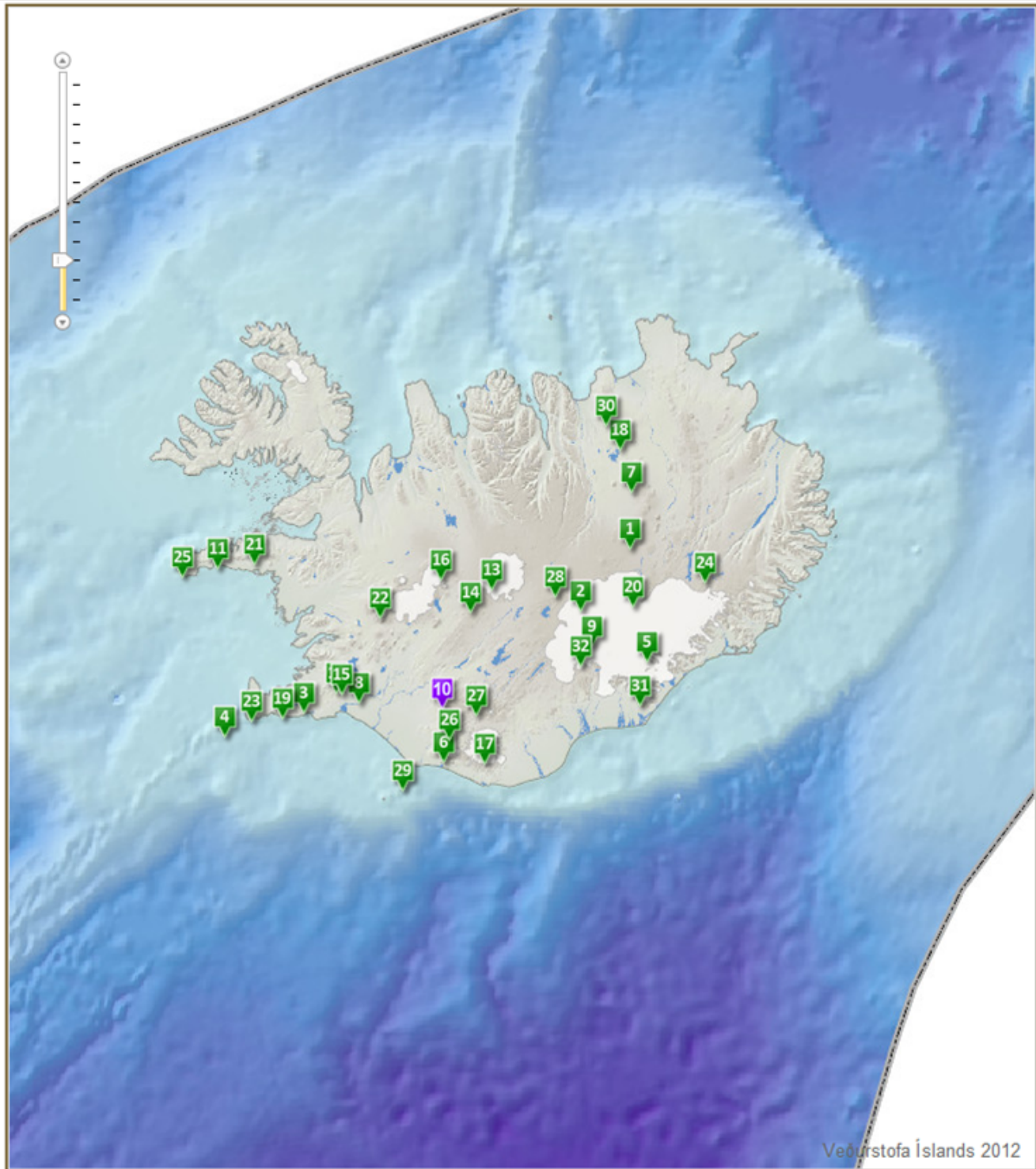


Icelandic Volcanoes

Alert

Volcanoes Data Portal Catalogue

 1 Askja	 2 Bárðarbunga	 3 Brennisteinsfjöll
 4 Eldey	 5 Esjufjöll	 6 Eyjafjallajökull
 7 Fremrinámur	 8 Grímsnes	 9 Grímsvötn
 10 Hekla	 11 Lýsuskarð	 12 Hengill
 13 Hofsjökull	 14 Kerlingarfjöll	 15 Hrómundartindur









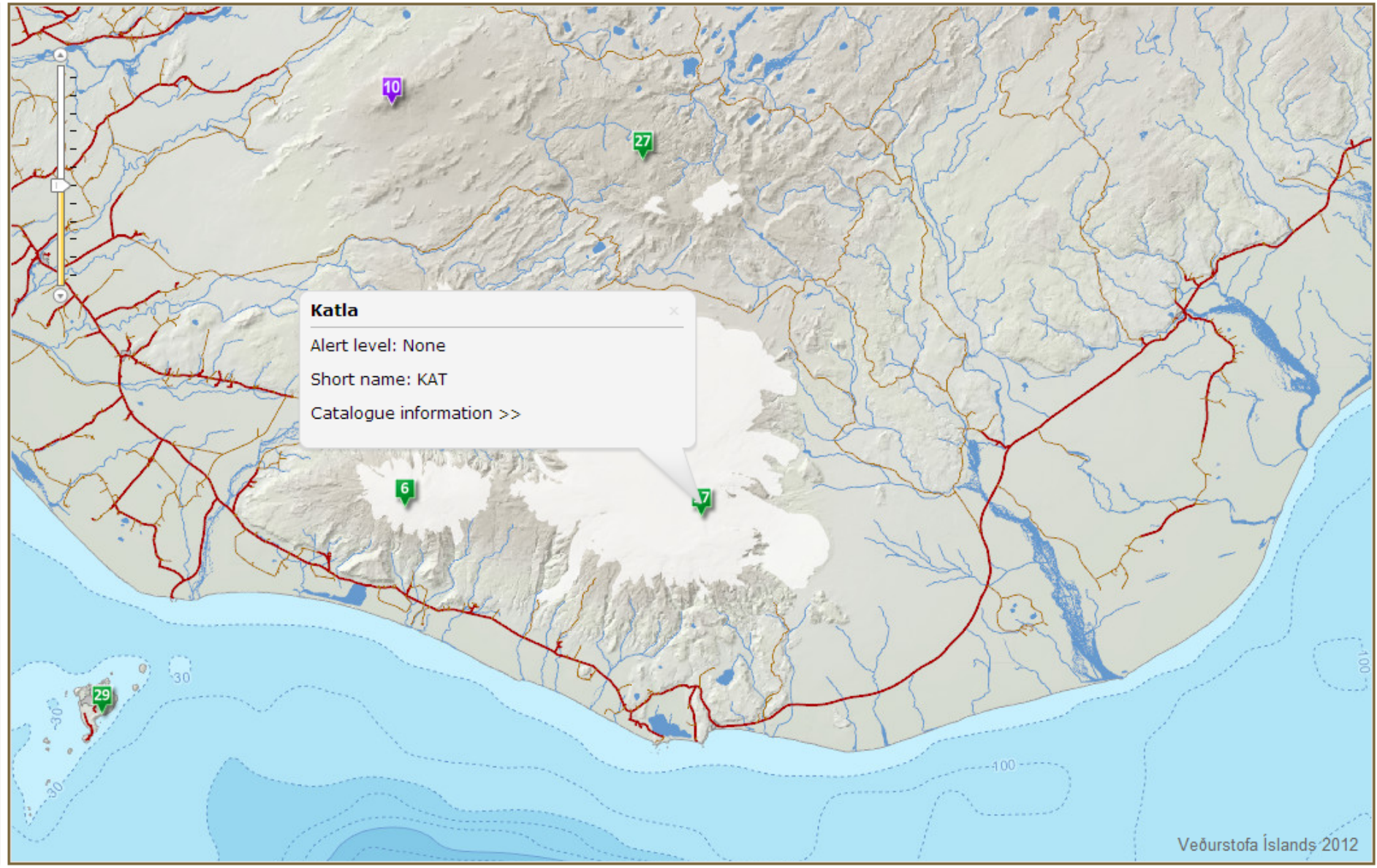


Icelandic Volcanoes

Alert

Volcanoes Data Portal Catalogue

 6 Eyjafjallajökull	 10 Hekla	 17 Katla
 26 Tindafjöll	 27 Torfajökull	 29 Vestmannaeyjar





Icelandic Volcanoes

Alert

Volcanoes Data Portal Catalogue KAT

Alternative name: **Mýrdalsjökull**
By John Doe and Jane Doe

Short Description

One of three most active central volcanoes in Iceland with 20 explosive eruptions in the last 1100 years, ranging in size from VEI 2 to VEI 5, with VEI 3-4 being most common. Products mostly basaltic tephra but rhyolitic eruptions occur at 1-2 kyear intervals. Upper part of central volcano a 100 km² subglacial caldera with eruptions causing catastrophic flooding and explosive magma-water interaction. A fissure swarm extends 80 km towards NE, with three known eruptions in last 10 kyears, including the 20 km³ VEI 5 Eldgjá eruption in 934.

Central Volcano

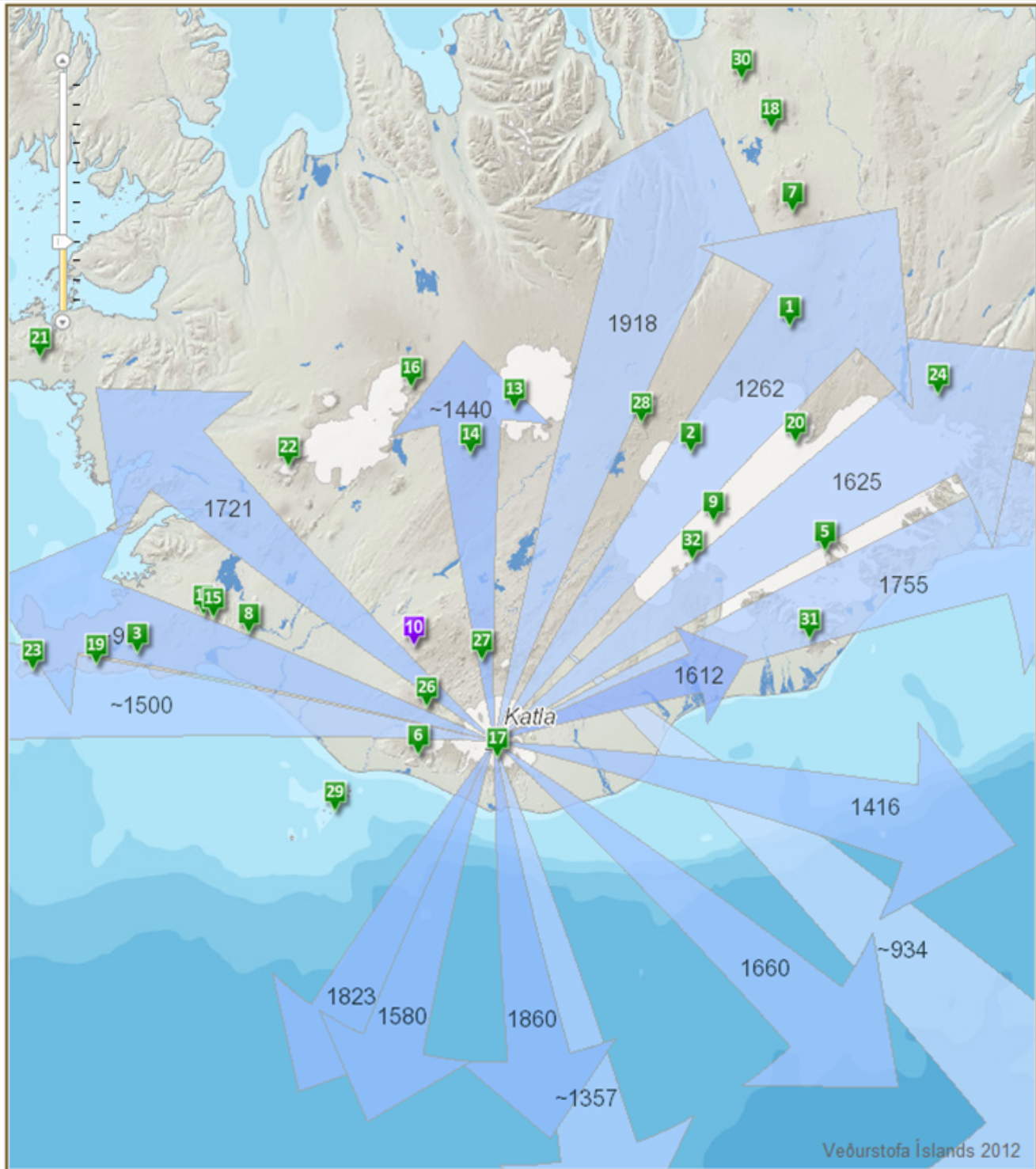
Fissure swarm

Detailed Description

- ▶ 1. Geological setting and tectonic context
- ▶ 2. Morphology and topography
- ▶ 3. Plumbing system and subsurface structure
- ▶ 4. Eruption history and pattern
- ▶ 5. Precursory signals
- ▶ 6. Erupted material
- ▶ 7. Volcanic hazards
- ▶ 8. Activity status and monitoring
- ▶ 9. Possible eruption scenarios – based on last 1100 years
- ▶ 10. Worst case scenarios
- ▶ 11. Extent of knowledge and bibliography
- ▶ 12. Selected references
- ▶ 13. Selected figures

Maps

- Volcano
- Tephra fall probability
- Maximum range of isopachs
- Eruption-based isopachs - 1500 AD
- Tephra dispersal - 1700-10.300 BP
- Tephra dispersal - AD 900-2000





Icelandic Volcanoes

Alert

Volcanoes Data Portal **Catalogue**

VolcanoID

Volcano Type

Volcano subtype 1

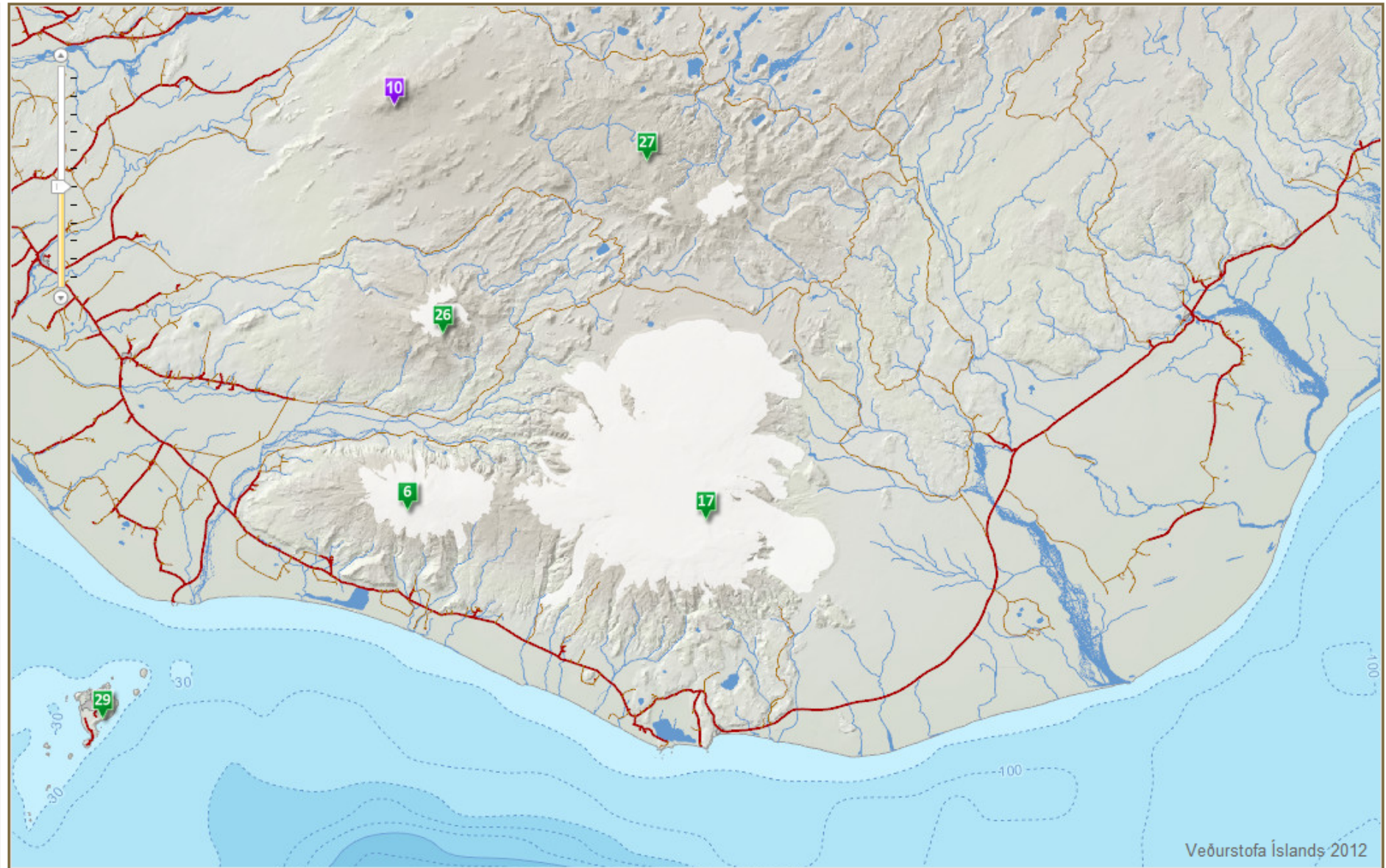
Volcano subtype 2

Eruption year from

Eruption year to

Floods

Magma Composition



Veðurstofa Íslands 2012

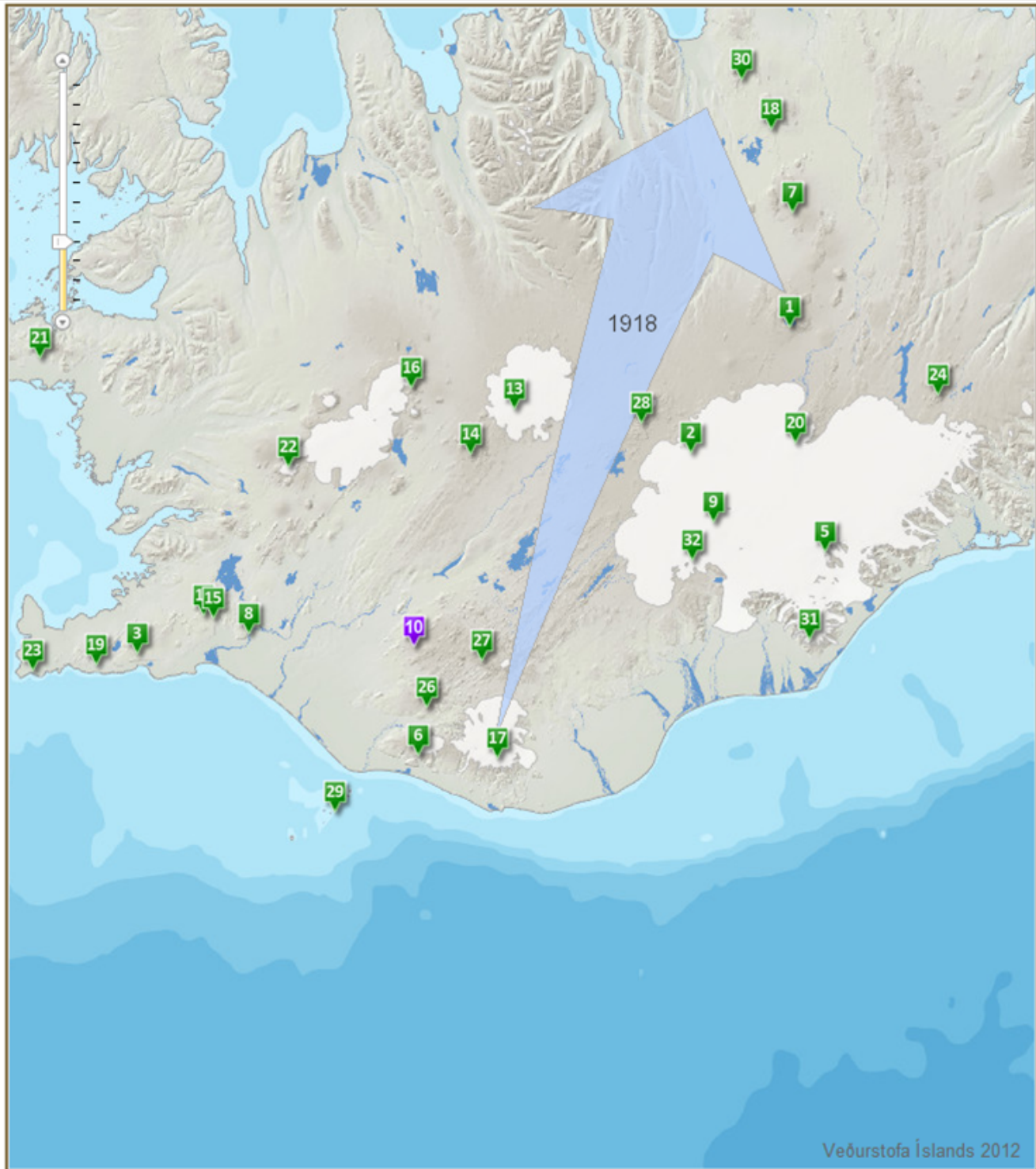


Icelandic Volcanoes

Alert

Volcanoes Data Portal Catalogue Eruption search

Volcano Id	Volcano Type	Volcano Subtype 1	Volcano Subtype 2	Eruption Year	Eruption Type	Magma Composition	Floods
KAT	CV	Caldera	Subglacial	2011	Unconfirmed eruption	Basaltic	Small
KAT	CV	Caldera	Subglacial	1999	Unconfirmed eruption	Basaltic	Small
KAT	CV	Caldera	Subglacial	1955	Unconfirmed eruption	Basaltic	Small
KAT	CV	Caldera	Subglacial	1918	Explosive	Basaltic	Very large
KAT	CV	Caldera	Subglacial	1860	Explosive	Basaltic	Medium
KAT	CV	Caldera	Subglacial	1823	Explosive	Basaltic	Large
KAT	CV	Caldera	Subglacial	1755	Explosive	Basaltic	Very large
KAT	CV	Caldera	Subglacial	1721	Explosive	Basaltic	Very large
KAT	CV	Caldera	Subglacial	1660	Explosive	Basaltic	Very large
KAT	CV	Caldera	Subglacial	1625	Explosive	Basaltic	Very large
KAT	CV	Caldera	Subglacial	1612	Explosive	Basaltic	Medium?
KAT	CV	Caldera	Subglacial	1580	Explosive	Basaltic	Medium?
KAT	CV	Caldera	Subglacial	1500	Explosive	Basaltic	Large?
KAT	CV	Caldera	Subglacial	1500	Explosive	Basaltic	Size?
KAT	CV	Caldera	Subglacial	1440	Explosive	Basaltic	Size?
KAT	CV	Caldera	Subglacial	1416	Explosive	Basaltic	Size?
KAT	CV	Caldera	Subglacial	1357	Explosive	Basaltic	Size?
KAT	CV	Caldera	Subglacial	1262	Explosive	Basaltic	Size?
KAT	CV	Caldera	Subglacial	1245	Explosive	Basaltic	Size?
KAT	CV	Caldera	Subglacial	1179	Explosive	Basaltic	Size?
KAT	CV	Caldera	Subglacial	1200	Explosive	Basaltic	Size?
KAT	FS	Fissure	Subaerial	934	Ex & eff	Basaltic	Very large
KAT	CV	Caldera	Subglacial	920	Explosive	Basaltic	Size?
KAT	CV	Caldera	Subglacial	900	Explosive	Basaltic	Size?



Veðurstofa Íslands 2012



Icelandic Volcanoes

Alert

Volcanoes | Data Portal | Catalogue

Keywords:

Location:

North:

South:

West:

East:

Date Range:

Date from: x

Date to: x

Upload date range:

Date from:

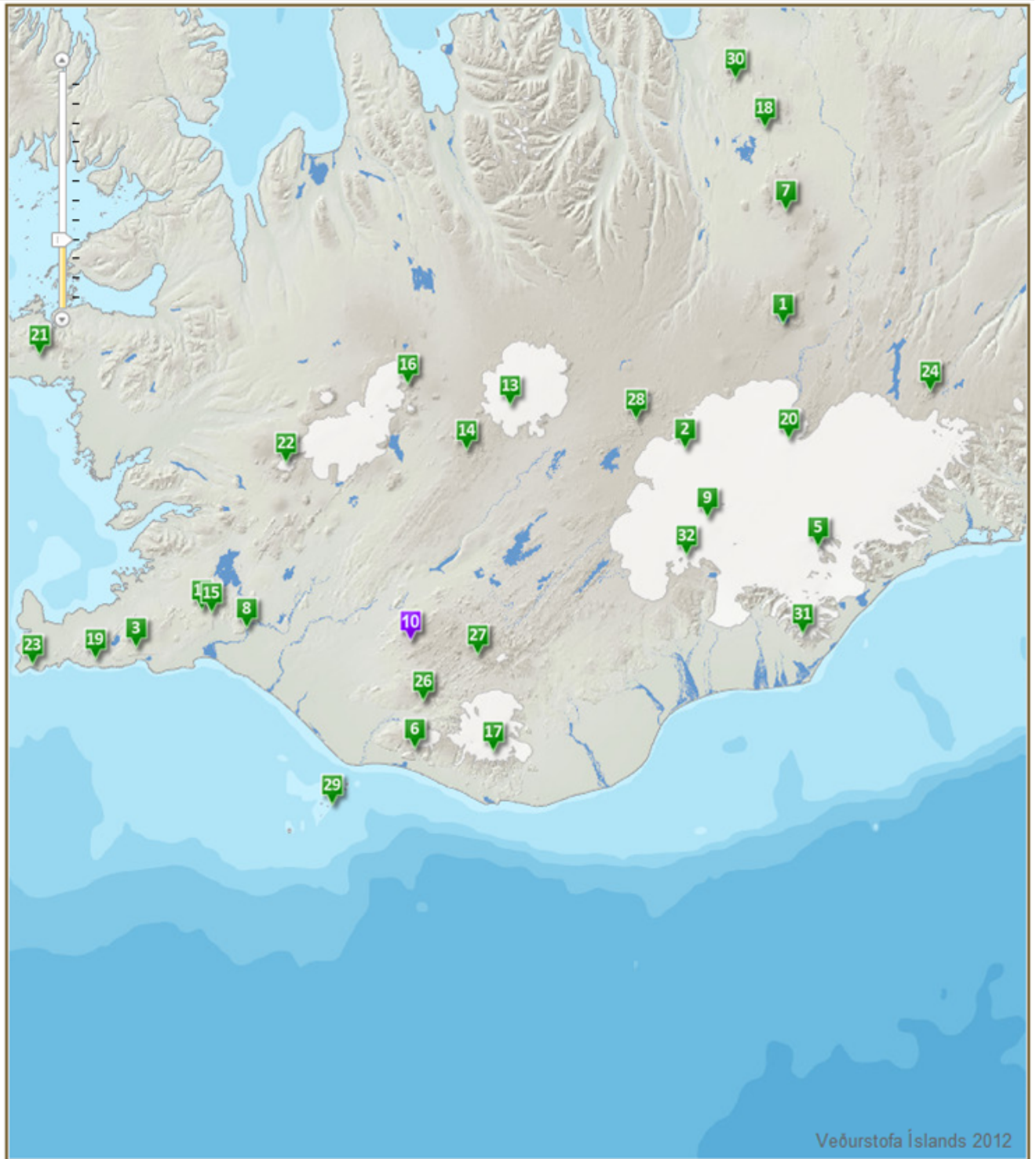
Date to:

Category

- GPS
- SIL
- Weather

Data level

- Raw data
- Preprocessed raw data
- Processed Data





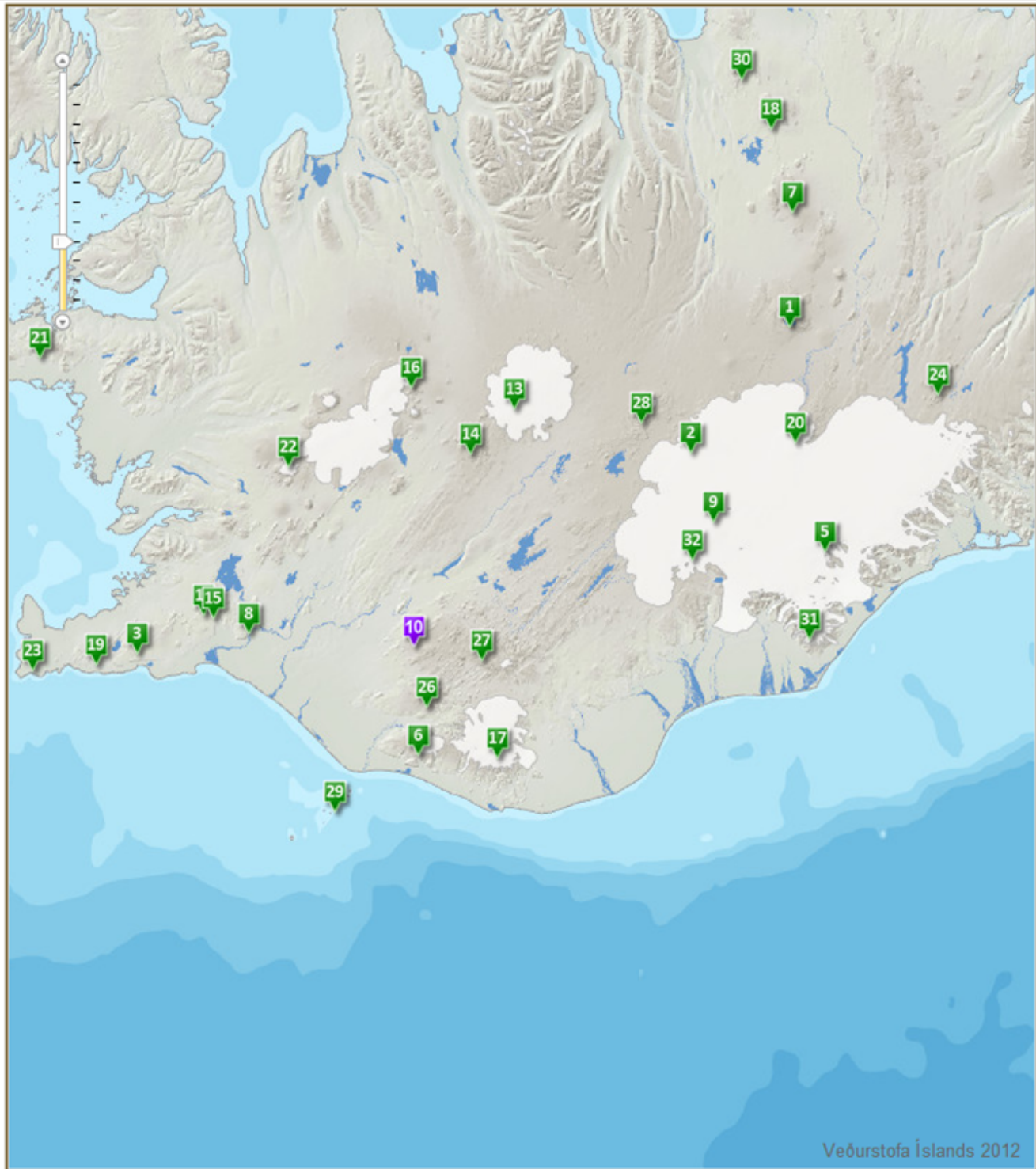
Icelandic Volcanoes

Alert

Volcanoes Data Portal Catalogue Data Portal search

	Name	Category	Access restrictions	Data level	Date from	Date to	Upload date	File count	Total size
<input type="checkbox"/>	GOLA	GPS	Open	raw	04/01/2010	04/02/2010	09/09/2013	50	24.2 MB
<input type="checkbox"/>	FIM2	GPS	Open	undefined	04/01/2010	04/02/2010	09/09/2013	3	3.2 MB
<input type="checkbox"/>	SKOG	GPS	Restricted	raw	04/01/2010	04/02/2010	09/09/2013	3	3.3 MB
<input type="checkbox"/>	STE2	GPS	Open	undefined	04/01/2010	04/02/2010	09/09/2013	3	3.1 MB
<input type="checkbox"/>	SOHO	GPS	Open	raw	04/01/2010	04/02/2010	09/09/2013	3	5.2 MB
<input type="checkbox"/>	STOR	GPS	Open	raw	04/01/2010	04/02/2010	09/09/2013	75	38.6 MB

Download data



Veðurstofa Íslands 2012